

# RJ11-F-F-V1A

## 1. Description:

RJ11-F-F-V1A is a simple RJ11 6P6C Female to RJ11 6P6C Female pass-through adapter breakout board. It brings all 6 pins of two RJ11 6P6C Female connectors to screw terminal blocks and headers for easy testing, prototyping and breadboard connection. All 6 pins of a Female connector directly connect to another Female connector. User can also use the two 6 pins headers on both sides of the breakout board to connect to breadboard or prototype PCB.

## 2. Features:

- All 6 pins of two RJ11 6P6C Female connectors to screw terminal blocks
- All 6 pins of a Female connector directly connect to another Female connector.
- Various connecting method chosen by users.
- 0.9"(22.86mm)X1.3"(33.02mm) board dimensions

## 3. Parts:

- 1) 1pc X RJ11-F-F-V1A PCB
- 2) 2pc X RJ11 6P6C Female Connector
- 3) 1pc X 6pin 0.1"(2.54mm) spacing terminal block
- 4) 1pc X 12pin 0.1"(2.54mm) header

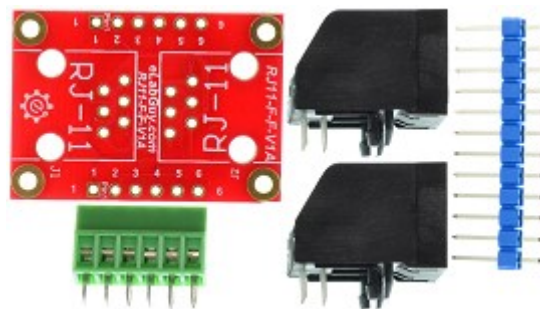
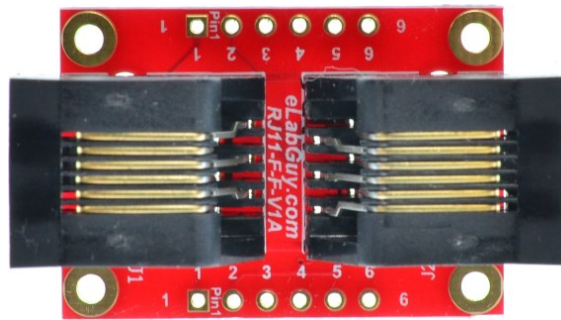


Figure 1: Parts inside the kit  
(Note: the module is not assembled, user can decide which connector to use on the module.)

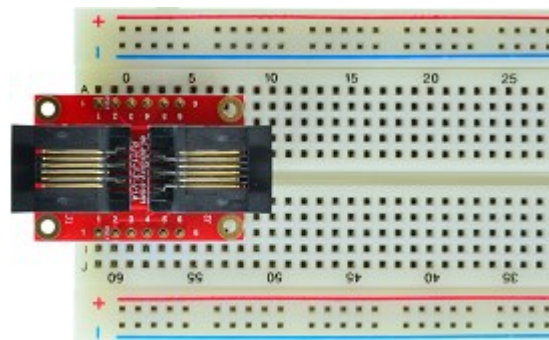


Figure 2: Example of connecting the RJ11-F-F-V1A on a breadboard (Note: This picture only shows the pins spacing, actual use may not be used on a breadboard)

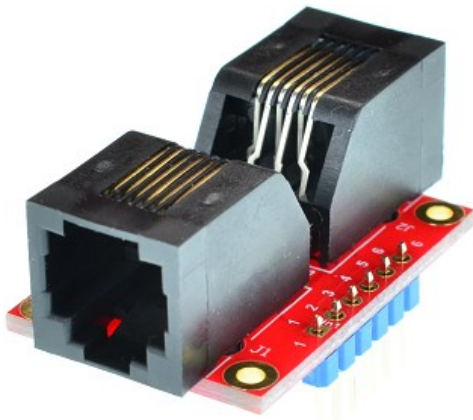


Figure 3: RJ11-F-F-V1A with headers

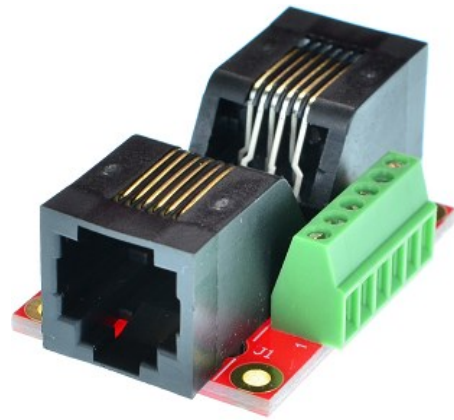
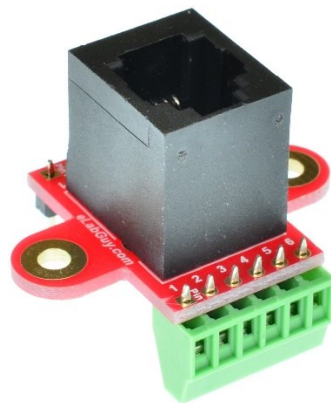


Figure 4: RJ11-F-F-V1A with terminal block

### Related products from eLabGuy:



**RJ11-BO-V2A**



**RJ11-BO-V1AV**